

Seattle Survival Guide

by Fred Hanson

The area code for all phone numbers in this guide is 206 unless otherwise stated.

Conference Hotels

Sheraton Seattle

1400 Sixth Ave., 621-9000

Hilton Seattle

1301 Sixth Ave., 624-0500

Red Lion Hotel on Fifth Avenue

(formerly West Coast Grand Hotel)
1415 Fifth Ave., 971-8000

Elliott Grand Hyatt Seattle

721 Pine St., 774-1234

Mayflower Park Hotel

405 Olive Way, 623-8700

Crowne Plaza Seattle

1113 Sixth Ave., 464-1980

Sixth Avenue Inn

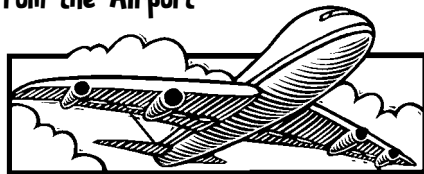
2000 Sixth Ave., 441-8300

Days Inn Town Center

2205 Seventh Ave., 448-3434

Coming Into Town

From the Airport



Shuttle Express

— approximately \$21
425/981-7000
<http://www.shuttleexpress.com>

Airport Express — Gray Line of Seattle
\$8.50 to \$11, depending on hotel. Make sure there is service to your hotel. Service every 30 minutes between 5:20 a.m. and 11:20 p.m.
626-6088 or 800/426-7532
<http://www.graylineofseattle.com>

STITA Taxis

From the airport, taxi fare is about \$30 for a trip to downtown Seattle.

Metro Transit

Bus routes 174 and 194 provide service between downtown and the airport.

Greyhound

The Greyhound bus station at 811 Stewart St. is a few blocks west of the Washington State Convention and Trade Center. 628-5526

Train

Amtrak runs through King Street Station. From there, you can catch a free bus at the International District Station in the bus tunnel, Monday through Saturday. Get off at the Westlake Station or the Convention Place Station. You can also ride a bus or grab a waiting taxi. Please note that the Bus Tunnel is closed on Sundays and holidays and open Monday–Friday from 5 a.m.–7 p.m. and 10 a.m.–6 p.m. on Saturdays.



age of 18 may ride free when accompanied by any customer paying an adult fare.

Family Plan — On Sunday, up to four children under the

Getting Around Town

Taxis

Gray Top 282-8222
Orange Cab 522-8800
Yellow Cab 622-6500

Monorail

The Monorail runs between Fifth Avenue and Pine Street and the Seattle Center every 10 minutes for a two-minute ride. It runs from 9 a.m.–11 p.m. every day. Round-trip tickets cost \$3 for adults and \$1.50 for youths; half fare for one-way travel. The monorail provides a grand trip to the myriad attractions at the Seattle Center.

Metro

<http://transit.metrokc.gov/>

Ride Free Zone — An area encompassing most of downtown, from Pioneer Square to Battery Street, and from the freeway to the waterfront.

Bus Tunnel — In addition to street-level bus service, buses travel along a 1.3 mile-long tunnel running through the heart of downtown. Easy access from street level at five stops: Convention Place, Westlake, University, Pioneer Square and International District. Tunnel hours are 5 a.m.–7 p.m. on weekdays and 10 a.m.–6 p.m. on Saturdays. The tunnel is closed on Sundays and holidays. When it is closed, routes operate in both directions along Third Avenue between Yesler Way and Olive Way. Southbound buses travel west along Stewart Street before turning south on Third Avenue.

Bus fares: \$1.25 off-peak, \$1.50 peak hours everywhere else in the city outside the Ride Free Zone; \$1.25 off-peak, \$2 peak hours outside Seattle.

Peak hours are 6 a.m.–9 a.m. and 3 p.m.–6 p.m.

Saturday/Sunday — All-Day Passes are available on weekends for \$2.50.

Drivers carry no change, so exact fare is required.

If you need to change buses to get to your final destination, ask the driver for a transfer when you pay. Transfers are valid on any Metro bus or the Waterfront Streetcar for about one hour after they are issued.



SEATTLE

On buses traveling into downtown Seattle, pay your fare as you board. On buses traveling out of downtown Seattle, pay when you exit.

Most buses have lifts for people with disabilities.

For 24-hour bus information, call 553-3000.

Waterfront Streetcar

Travels from Pier 70 along the waterfront and up to the International District. Bus fares apply.

Walking

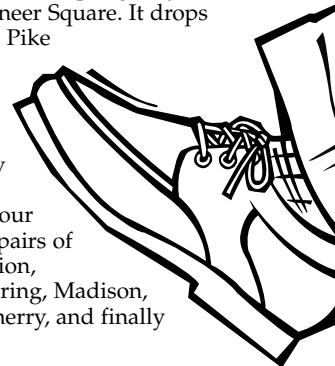
Avenues run north and south; streets run east and west. Downtown slopes gently downhill south to Pioneer Square. It drops quite steeply from the Pike Place Market to the waterfront. Walking south, use the mnemonic memory phrase **People Usually See Me Crossing Jefferson** to identify your location according to pairs of streets: Pine, Pike, Union, University, Seneca, Spring, Madison, Marion, Columbia, Cherry, and finally James and Jefferson.

Seattle has a reputation for enforcing jaywalking laws. At \$42 a ticket, crossing against a light can be hazardous to your wallet as well as your life.

Seattle is a relatively safe city. However, like most big cities, visitors should take precautions. Travel in groups or by taxi at night, especially in Belltown and Pioneer Square.

Driving

Seattle is infamous for freeway congestion. If you do drive on the freeways, be aware that the high occupancy vehicle (HOV) lanes require two people per vehicle. If you drive downtown, watch for one-way streets. Street parking is usually difficult to find and expensive. Lot parking, particularly “early bird” rates, provides a better alternative.



Downtown Shopping and Services

Nordstrom — flagship store
500 Pine St., 628-2111
<http://www.nordstrom.com>

The Bon Marché
1601 Third Ave., 506-6000

Eddie Bauer
1300 Fifth Ave., 622-2766
<http://www.eddiebauer.com>

Niketown
1500 Sixth Ave., 447-6453

Pacific Place — five levels of upscale shopping, with movies and eateries
600 Pine St., 405-2655
<http://www.pacificplaceseattle.com>

Westlake Center — four floors of shopping, with plenty of places to grab a bite
400 Pine St., 467-3044
<http://www.therousecompany.com>

Downtown Mariners Baseball Club Store
1800 Fourth Ave., 346-4327
<http://seattle.mariners.mlb.com>

Dry Cleaner
Northwest Tailors & Cleaners
1516 Second Ave., 623-5737

Shoe Repair
Ramuta's Shoe Repair
609 Stewart St., 622-5800

Book Stores
Barnes & Noble
600 Pine St., 264-0156
<http://www.barnesandnoble.com>

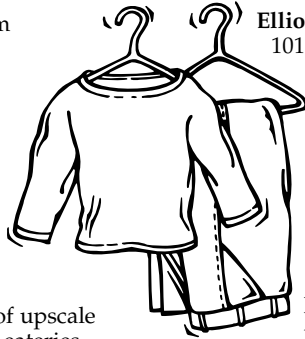
University Bookstore
1225 Fourth Ave., 545-9230

Borders Books & Music
1501 Fourth Ave., 622-4599
<http://www.bordersstores.com>

Elliott Bay Book Company
101 S. Main St. (Pioneer Square),
624-6600
<http://www.elliottbaybook.com>

Bailey/Coy Books
414 Broadway Ave. E.
(Capitol Hill), 323-8842

Beyond the Closet Bookstore
518 E. Pike St., 322-4609
<http://www.beyondthecloset.com>



Copying
Kinko's
800 Convention Place, Washington State
Convention and Trade Center, 467-1767

LazerQuick
1813 Seventh Ave., 622-4387

Minuteman Press
515 Union St., 464-0100

Movies
Cineplex Odeon/Meridian 16
1501 Seventh Ave., 223-9600

Pacific Place/AMC Theaters
600 Pine St., 652-2404

Cinerama
2100 Fourth Ave., 441-3080

Film Developing
Film Stop
1826 Sixth Ave., 682-5060

Ken's Camera
1327 Second Ave., 223-5553

Bartell Drug Stores
1628 Fifth Ave., 622-0581
1404 Third Ave., 624-1366
<http://www.bartelldrugs.com>

Rite Aid Pharmacies
319 Pike St., 223-0512
<http://www.riteaid.com>

Kids

Seattle Center — Attractions for all ages, including the Space Needle's stunning views and revolving restaurant, the Children's Theater, IMAX theater, Pacific Science Center and Experience Music Project. Within walking distance or easily accessible by Monorail from Fifth Avenue and Pine Street.
305 Harrison St., 684-7200
<http://www.seattlecenter.com>

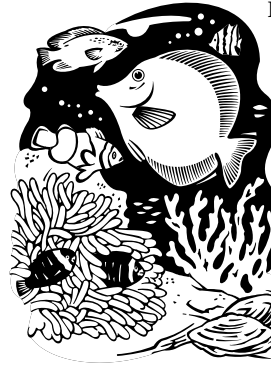
The Children's Museum
Center House, Seattle Center, 441-1768
<http://www.thechildrensmuseum.org>

Experience Music Project
325 Fifth Ave., Seattle Center, 367-5483
<http://www.emplive.com>

Pacific Science Center
200 Second Ave. N.,
Seattle Center, 443-2001
<http://www.pacsci.org>

Seattle Aquarium
1483 Alaskan Way, Pier 59,
Waterfront Park, 386-4320
<http://www.seattleaquarium.org>

Woodland Park Zoo
5500 Phinney Ave. N.,
684-4800
<http://www.zoo.org>



GameWorks
1511 Seventh Ave., 521-0952
<http://www.gameworks.com>

FAO Schwarz
1420 Fifth Ave., 442-9500
<http://www.fao.com>

Media

Newspapers

Seattle Post-Intelligencer
morning

Seattle Times
morning

Seattle Weekly, free
weekly on
Wednesdays

The Stranger, free
weekly on Thursdays



Radio

KIRO (710 AM) — news, talk, sports

KJR (950 AM) — sports

KPLU (88.5 FM) — NPR, jazz

KUOW (94.9 FM) — NPR, UW

KMPS (94.1 FM) — hit country

KJR (95.7) — classic hits

KING (98.1 FM) — classical

KWJZ (98.9 FM) — smooth jazz

KZOK (102.5 FM) — classic rock

Television

KOMO (ABC) Channel 4

KING (NBC) Channel 5

KIRO (CBS) Channel 7

KCTS (PBS)
Channel 9

KCPQ (Fox)
Channel 13



Attractions

Pike Place Market — The premier tourist attraction in Seattle; a genuine farmer's market with fishmongers, butchers, green grocers and craft sellers. Shops and restaurants abound within and around the market.

Pioneer Square — The oldest section of the city, with many art galleries, shops and restaurants; take Bill Speidel's Underground Tour.

Washington State Ferries — Sail out across Puget Sound; \$5.40 provides a 60-minute ride to Bremerton or a 30-minute ride to Bainbridge Island. The trip back is free. Splendid views and a chance to see sea lions, seals and Orcas.

Waterfront — A fine place for a stroll among restaurants, shops, the Seattle Aquarium, an IMAX theater, boats and the water.

Seattle Center — Home of the Space Needle, Experience Music Project, Children's Theater, Pacific Science Center, IMAX theater, a food court, a fun center and more.

Tillicum Village — Located on Blake Island; tours include a boat ride to and from the island, a glimpse into Indian culture and a salmon bake.

Hiram M. Chittenden Locks — Watch boats make their way through the locks from Puget Sound to Lake Union and Lake Washington; adjacent to the botanical gardens and a fish ladder.

Belltown — Boutiques, clubs and restaurants.

Commercial Tours

Ride the Ducks of Seattle
516 Broad St., 441-3825
<http://www.seattleducktours.net>

Argosy Cruises — water tours
1101 Alaskan Way, Pier 55, Suite 201,
623-1445
<http://www.argosycruises.com>

Bill Speidel's Underground Tour —
in Pioneer Square
608 First Ave., 682-4646
<http://www.undergroundtour.com>

Show Me Seattle Tours
633-2489
<http://www.showmeseattle.com>

Sightseeing of Seattle
526-1444
<http://www.sightseeingofseattle.com>

Seattle City Tours
888/293-1404
<http://www.seattlecitytours.com>

Gray Line Tours
626-5208 or 800/426-7532
<http://www.graylineofseattle.com>

Seattle Walking Tours
425/885-3173



Museums

Seattle Art Museum
100 University St., 654-3100
<http://www.seattleartmuseum.org>

Frye Art Museum — free admission
704 Terry Ave., 622-9250
<http://www.fryeart.org>

Museum of Flight (next door to Boeing Field)
9404 E. Marginal Way S.,
764-5720
<http://www.museumofflight.org>

Burke Museum of Natural History and Culture
17th Ave. N.E. and N.E.
45th St., northern end of University of Washington campus, 543-5590
<http://www.washington.edu/burkemuseum/>

Professional Sports Teams

Seattle Mariners baseball, Safeco Field
1250 First Ave. S., 346-4000
<http://seattle.mariners.mlb.com>
Home games against Tampa Bay:
7:05 p.m. on July 11, 7:05 p.m. on July 12, 1:05 p.m. on July 13

Seattle Sounders soccer, Seahawks Stadium
800 Occidental Ave. S., 622-3415
<http://www.seattlesounders.net>
Home games:
7 p.m. on July 11 and 5 p.m. on July 13

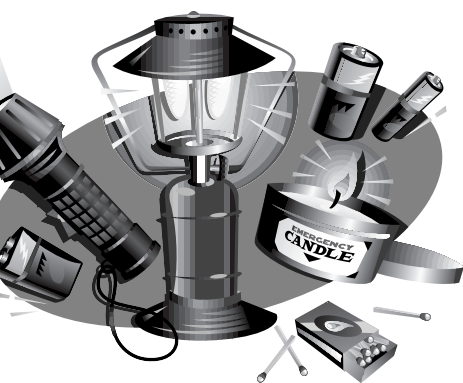
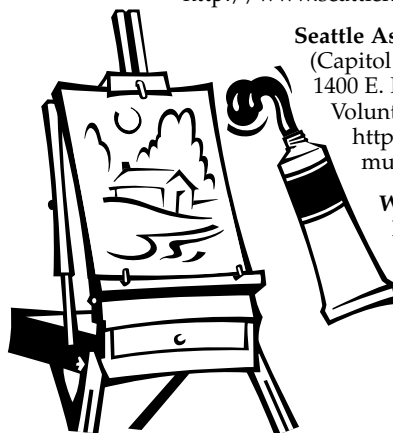


Henry Art Gallery (University of Washington)
15th Ave. and N.E. 41st St., 543-2280
<http://www.henryart.org>

Museum of History and Industry (near University of Washington)
McCurdy Park, 2700 24th Ave. E., 324-1126
<http://www.seattlehistory.org>

Seattle Asian Art Museum (Capitol Hill, Volunteer Park)
1400 E. Prospect St.,
Volunteer Park, 654-3100
<http://www.seattleartmuseum.org>

Wing Luke Asian Museum (International District)
407 Seventh Ave. S., 623-5124
<http://www.wingluke.org>



Renowned Outdoor Gear (A Seattle Specialty)

REI — flagship store
222 Yale Ave. N., 223-1944

Patagonia Seattle
2100 First Ave., 622-9700
<http://www.patagonia.com>

The North Face
1023 First Ave., 622-4111
<http://www.thenorthface.com>

Feathered Friends
119 Yale Ave. N., 292-2210
<http://www.featheredfriends.com>

Marmot Mountain Works
827 Bellevue Way, N.E. Bellevue,
425/453-1515
<http://www.marmotmountain.com>

Important Numbers

Emergencies, 911

Police (non-emergencies), 625-5011

Poison Center, 800/222-1222

Crisis Line (24 hours), 461-3222

Crisis Line (TTY only), 461-3219

Rape Crisis Line, 632-7273

**Alcohol/Drug 24-Hour Help Line,
722-3700**

**Al-Anon Information Service,
625-0000**

Medical Attention

Swedish Medical Center
747 Broadway, 386-6000
<http://www.swedish.org>

Virginia Mason Main Clinic
1100 Ninth Ave., 223-6600
<http://www.vmmc.org/dbClinics/clinic142.htm>

Harborview Medical Center
325 Ninth Ave., 731-3000
<http://www.washington.edu/medicine/hmc/>

Seattle-King County Dental Society
2201 Sixth Ave., Suite 1306, 443-7607
<http://www.skcds.org/>



Pharmacies

Bartell Drug Stores
1628 Fifth Ave.,
622-0581
1404 Third Ave.,
624-1366
<http://www.bartelldrugs.com>

Rite Aid Pharmacies
319 Pike St., 223-0512
<http://www.riteaid.com>

Eyeglass Repair

Davis Optical Xpress
1912 Third Ave., 623-1758

Optical Illusions
1523 Sixth Ave., 292-1074

Market Optical
1906 Pike Place, #8, Pike Place
Market, 448-7739

Churches in Downtown Seattle

First Presbyterian of Seattle
1013 Eighth Ave., 624-0644

Plymouth Congregational Church
1217 Sixth Ave., 622-4865

Seattle First United Methodist Church
811 Fifth Ave., 622-7278

Gethsemane Lutheran Church
911 Stewart St., 682-3620

Seattle First Baptist Church
1111 Harvard Ave., 325-6051

St. James Cathedral
804 Ninth Ave., 622-3559

Downtown Trinity Episcopal Church
609 Eighth Ave., 624-5337



Seattle in General

Groceries

QFC (major chain store)
523 Broadway E., up Capitol Hill at
Pike Street and Broadway Avenue,
322-8200

Stewart Street Market
1812 Eighth Ave.,
344-5185

**Ralph's Grocery
Deli**
2035 Fourth Ave.,
441-0700

Clay's Market
815 Pike St.,
264-0306

Post Office
301 Union St.
800/275-8777

Liquor Sales

Sale of hard liquor only in state stores.
1302 Sixth Ave., 389-2564, open 11 a.m.–
6 p.m. Monday–Friday; Second Avenue and
Seneca Street, open 10:30 a.m.–6:30 p.m.
Monday–Saturday

Beer and Wine

Available seven days a week
in grocery stores and commercial
outlets

Sales Tax

8.8 percent on everything, except
groceries; 9.3 percent in restaurants
and taverns

Telephone Area Code

206 for Seattle; 425 for Eastside
(Bellevue numbers)



Weather

Generally sunny skies for July. July average
temperature: 75 degrees; average rainfall:
.73 inches. Rain can always blow in from the
ocean, so be prepared.



Seattle's Convention and Visitors Bureau

Seattle's Convention and Visitors Bureau has a Visitor Information Center in the galleria level of the Washington State Convention and Trade Center. It has brochures and representatives to answer questions about Seattle's many sights and activities. The Visitor Information Center is open Monday–Friday from 8:30 a.m.–5 p.m. and on Saturday from 10 a.m.–4 p.m.